



ISO  
9001:2015



# A classic bathware collection

CATALOGUE **2024**



*Getting into the flow*



Navagam Road, Near Alpine Ceramic,  
THANGADH - 363 530 (Guj. India)

T: +91 98253 23616 | 99250 23616  
E: agoxcera@gmail.com  
W: www.agoxcera.com



www.agoxcera.com



## COMPANY PROFILE

**AGOX Sanitary wares** is a modernized enterprise integrated with R&D, Manufacturing, sales and service.

We have a complete sales strategy and effective sales team, applying brand strategy, setting up enterprise image and being the advocator and pioneer in the field of world class sanitary ware.

Keep improving and striving for excellence is the core strategy to our quality requirement. The company is devoting itself to exploring deeper on global sanitary ware, so as to provide high-quality products and sincere, sophisticated service to the whole society and customers, to build up the better life for all humans.

### **Manufacturing Facility**

Our use of innovative manufacturing technologies means that we are able to create excellent quality sanitary ware products in the latest designs at extremely competitive prices.

AGOX Sanitary ware is a company that has big scale, high technology and variety of products. It has over 20 series of sanitary- ware including art basin, cabinet basin, wall-hung toilet, one-piece toilet, two-piece toilet, pedestal basin, wall-hung basin, counter basin and pan-urinal.

From designer to manufacturing, we only use the most technologically advanced materials and processes. This ensured our position as market-leader and innovative creators of sanitary and bathroom wares.



# PRODUCT CHARACTERISTICS



Each product Radiates  
Glossiness and Whiteness.



Use of finest Raw materials -  
Purified, tested and Certified by R&D.



Use of advanced German technology  
With fully computerized Controlled shuttle kiln.



Use of eco - friendly Natural gas  
residues for better shine and luster.



Production Process according  
To ISI and ISO Standards.



High - tempered firing with  
Hygiene-friendly Production process.



Water - saving flushing system  
With 6/3 litre knobs.



Soft closing Seat cover.  
is a plus advantage



Anti Bacterial  
Glazed Product



Easy to clean  
& maintain Seat cover



## INDEX



1	ONE PIECE Page - 01
2	WATER CLOSET Page - 01
3	FLOOR MOUNT CLOSET Page - 01
4	WALLHUNG CLOSET Page - 01
5	WASH BASIN Page - 01
6	WASH BASIN HALF PEDESTAL Page - 01
7	TABLE TOP BASIN Page - 01
8	ONE PIECE BASIN Page - 01
9	PAN & URINAL Page - 01
10	DESIGNER COLLECTION Page - 01





# One Piece Closet



101 - SENTRO

28" x 14" x 26"  
S trap 12" - P trap 9"



102 - RECTO

25" x 13" x 26"  
S trap 12" - P trap 9"



103 - CLASSIC

28" x 14" x 27"  
S trap 12" - P trap 9"



Water Closet



**104 - VEGA** 26" x 14" x 29"  
S trap 12" - P trap 9"



**105 - EUROPA** 28" x 14" x 25"  
S trap 12" - P trap 9"



**106 - BELINO** 25" x 14" x 28"  
S trap 12" - P trap 9"



**701 - EWC - S** 19" x 14.5" x 16"



**107 - TERRA** 25" x 13" x 27"  
S trap 12" - P trap 9"



**108 - AENTO** 26" x 14" x 29"  
S trap 12" - P trap 9"



**109 - FOUR SQUARE** 29" x 14" x 27"  
S trap 12" - P trap 9"



**110 - DIAMOND** 27 x 15 x 30  
S trap 12" - P trap 9"



**111 - SKY - 5D** 26 x 14 x 29  
S trap 12" - P trap 9"



**112 - SPACE - 6D** 26 x 14 x 25  
S trap 12" - P trap 9"



**706 - ANGLO - P** 25 x 13 x 26  
P trap 9"



**707 - EWC Consealed** 28 x 14 x 27  
S trap 12"



# Water Closet

2 PIECE SET



SIGMA SET

25 x 13 x 26  
S trap 12" - P trap 9"

# Water Closet

2 PIECE SET



AQUA SET

30" x 16" x 28"  
S trap 12"



SQUARE AQUA SET

28 x 14 x 27  
S trap 12"



IRANI SET

25 x 13 x 26  
S trap 12"



BABY IRANI SET

28 x 14 x 27  
S trap 12"



BALOON SET

25 x 13 x 26  
S trap 12"



ITALIAN - P SET

28 x 14 x 27  
P trap 9"



Wall Hung



501 - APPLE

21" X 16" X 14"



601 - DELITE

22" X 15" X 14"



603 - ROYAL

20" X 15" X 14"



9011

22" X 14" X 14"



9010

20" X 15" X 14"



9012

22" X 18" X 14"



9004

20" X 14" X 14"



502 - PLUTO

22" X 16" X 14"



503 - RAPID

20" X 15" X 14"



504 - DIAMOND

21" X 16" X 14"



9023

19" X 14" X 14"



NEW

22" X 15" X 14"

Wall Hung Basin



401 - REPOSE

22" x 17"



404 - RANI

17" x 12"



405 - CROMA

18" x 13"



406 - BRIO

18" x 12"



407 - CROWN

19" x 14"



408 - FLORA

12" x 9"



409 - CORNER

16" x 16"



402 - BASIN

20" x 16"



403 - EXOTICA

19" x 14"



410 - SWING

15" x 12"



411 - PRIME

18" x 14"



412 - ANTICA

18" x 12"



## Pedestal Basin Set



413 - PATRANI 18" x 14"



414 - LIVA 17" x 12"



415 - CANDY 18" x 14"



416 - LIZA 16" x 16"



417 - GOLDEN 18" x 14"



418 - MOON 16" x 13"



419 - SONA 23" x 17"



420 - AUDI 16" x 9"



DIAMOND 23" x 20" x 34"



VICTORIA 24" x 19" x 35"



SOPHIA 22" x 18" x 34"



STAR GOLD 23" x 18" x 35"



BIG STERLING 26" x 20" x 37"



**POLO**

23" x 17" x 33"

**CANDY**

18" x 14" x 31"

**SARA**

20" x 16" x 33"



**NAME**

21" X 16" X 14"



**REPOSE**

22" x 16" x 33"

**MINO POLO**

18" x 13" x 31"

**CROMA**

22" x 17" x 33"

**NAME**

22" X 16" X 14"

**NAME**

20" X 15" X 14"

**NAME**

21" X 16" X 14"

Table Top Basin



WT - 2301

22" x 17"



WT - 2304

17" x 12"



WT - 2305

18" x 13"



WT - 2306

18" x 12"



WT - 2307

19" x 14"



WT - 2308

12" x 9"



WT - 2309

16" x 16"



WT - 2302

20" x 16"



WT - 2303

19" x 14"



WT - 2310

15" x 12"



WT - 2311

18" x 14"

Pan



201 - FIONA 16" x 16" x 32"



202 - CROWNNY 16" x 16" x 33"



203 - CARNIVAL 15" x 19" x 32"



204 - CAPSULE 19" x 14" x 32"



205 - BENITO 16" x 15" x 32"



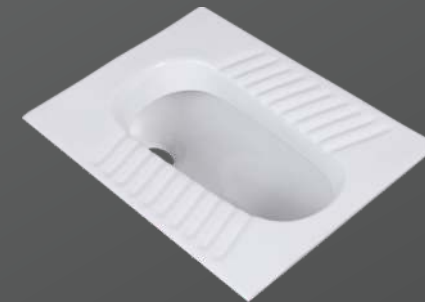
206 - SAGA 16" x 14" x 32"



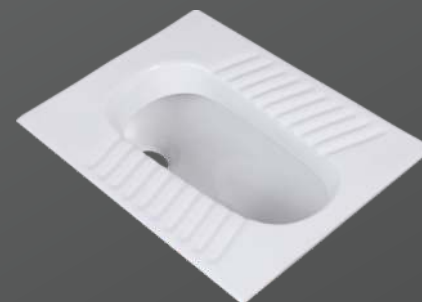
801 - CT PAN 20 x 16



802 - EASTERN PAN 20 x 17



803 - 20" OP DELUXE 20 x 16



804 - 20" OP REGULAR 20 x 16



805 - MD PAN 20 x 16



806 - ACCU. PAN 20 x 16



807 - 21" OP HEAVY 20 x 16



808 - 23" OP REGULAR 23 x 17



809 - 23" OP HEAVY 23 x 17

# Urinal



GENTS URINAL 16" x 13" x 10"



LADIES URINAL 17" x 14" x 4"



HALF STALL URINAL 23" x 15" x 4"



MINI URINAL 16" x 10" x 7"



CUBE URINAL 16" x 13" x 10"

# Lab Sink



LARGE 24" x 18" x 10"



SMALL 18" x 12" x 6"

# Trap



P - TRAP



BIG P - TRAP



S - TRAP

# Decorative Designer

SERISE

Floor Mount Designer



101 - BLACK

28" x 14" x 26"



101 - ALIPNE BLUE

28" x 14" x 26"



101 - AQUA GREEN

28" x 14" x 26"



101 - RED

28" x 14" x 26"



101 - COFFEE BROWN

28" x 14" x 26"



501 - SANITO

21x16



501 - WOODEN

21x16



501 - BLACK MARBLE

21x16



501 - WHITE MARBLE

21x16



501 - STICKER MARBLE

21x16



501 - COFFEE BROWN

21x16



1601 - ALPINE BLUE 22" x 16" x 33"

1602 - AQUA GREEN 22" x 16" x 33"

1602 - WOODEN 22" x 16" x 33"

*Star Gold Designer set*



VR - 201 23" x 18" x 35"

VR - 202 23" x 18" x 35"

VR - 203 23" x 18" x 35"



1604 - BLUE 22" x 16" x 33"

1605 - MAGENTA 22" x 16" x 33"

1606 - BURGUNDY 22" x 16" x 33"



VR - 204 23" x 18" x 35"

VR - 205 23" x 18" x 35"

VR - 206 23" x 18" x 35"



VR - 207

23" x 18" x 35"

VR - 208

23" x 18" x 35"

VR - 209

23" x 18" x 35"

VR - 213

23" x 18" x 35"

VR - 214

23" x 18" x 35"

VR - 215

23" x 18" x 35"



VR - 210

23" x 18" x 35"

VR - 211

23" x 18" x 35"

VR - 212

23" x 18" x 35"

VR - 216

23" x 18" x 35"

VR - 217

23" x 18" x 35"

VR - 218

23" x 18" x 35"





VR - 219

23" x 18" x 35"

VR - 220

23" x 18" x 35"

VR - 221

23" x 18" x 35"

VB - 601

26" x 20" x 37"

VB - 602

26" x 20" x 37"

VB - 603

26" x 20" x 37"



VR - 223

23" x 18" x 35"

VB - 604

26" x 20" x 37"

VB - 605

26" x 20" x 37"

VB - 606

26" x 20" x 37"



VB - 607

26" x 20" x 37"

VB - 608

26" x 20" x 37"

VB - 609

26" x 20" x 37"

VP - 401

23" x 17" x 33"

VP - 402

23" x 17" x 33"

VP - 403

23" x 17" x 33"



VB - 610

26" x 20" x 37"

VB - 611

26" x 20" x 37"

VB - 612

26" x 20" x 37"

VP - 404

23" x 17" x 33"

VP - 405

23" x 17" x 33"

VP - 406

23" x 17" x 33"

Mini Polo Designer set



VB - 607 23" x 17" x 33"



VB - 608 23" x 17" x 33"



VB - 609 23" x 17" x 33"



VMP - 1401 18" x 13" x 31"



VMP - 1402 18" x 13" x 31"



VMP - 1403 18" x 13" x 31"



VB - 610 23" x 17" x 33"



VMP - 1404 18" x 13" x 31"



VMP - 1405 18" x 13" x 31"



VMP - 1406 18" x 13" x 31"



6001

16" x 16" x 32"



6002

16" x 16" x 32"



6003

16" x 16" x 32"



6007

16" x 16" x 32"



6008

16" x 16" x 32"



6009

16" x 16" x 32"



6004

16" x 16" x 32"



6005

16" x 16" x 32"



6006

16" x 16" x 32"



6010

16" x 16" x 32"



6011

16" x 16" x 32"



6012

16" x 16" x 32"



6013 16" x 16" x 32" 6014 16" x 16" x 32" 6015 16" x 16" x 32"

6019 16" x 16" x 32" 6020 16" x 16" x 32" 6021 16" x 16" x 32"



6016 16" x 16" x 32" 6017 16" x 16" x 32" 6018 16" x 16" x 32"

6022 16" x 16" x 32" 6023 16" x 16" x 32" 6024 16" x 16" x 32"



7001 19" x 14" x 32" 7002 19" x 14" x 32" 7003 19" x 14" x 32"

7007 19" x 14" x 32" 7008 19" x 14" x 32" 7009 19" x 14" x 32"



7004 19" x 14" x 32" 7005 19" x 14" x 32" 7006 19" x 14" x 32"

7010 19" x 14" x 32" 7011 19" x 14" x 32"



4001 16" x 16" x 33"



4002 16" x 16" x 33"



4003 16" x 16" x 33"



4004 16" x 16" x 33"



4005 16" x 16" x 33"



4006 16" x 16" x 33"



4007 16" x 16" x 33"



4008 16" x 16" x 33"



4009 16" x 16" x 33"



9001 15" x 19" x 32" 9002 15" x 19" x 32" 9003 15" x 19" x 32"



9004 15" x 19" x 32" 9005 15" x 19" x 32" 9006 15" x 19" x 32"



8001 16" x 16" x 31" 8002 16" x 16" x 31" 8003 16" x 16" x 31"



8004 16" x 16" x 31" 8005 16" x 16" x 31" 8006 16" x 16" x 31"





0001 16" x 15" x 32"



0002 16" x 15" x 32"



0003 16" x 15" x 32"



0004 16" x 15" x 32"



0005 16" x 15" x 32"



0006 16" x 15" x 32"



0007 16" x 15" x 32"



0008 16" x 15" x 32"



2301 - STAR GOLD ALPINE BLUE 23" x 18" x 35"



2302 - STAR GOLD BLACK 23" x 18" x 35"



2303 - STAR GOLD RED BROWN 23" x 18" x 35"



2304 - STAR GOLD MAGENTA 23" x 18" x 35"



3201 - BLACK 18" x 12"



3202 - RED BROWN 18" x 12"



3203 - MAGENTA 18" x 12"



3204 - COFFEE 18" x 12"

Vitrosa Designer



3303 - BLACK 18" x 12"



3304 - MINT GREEB 18" x 12"



3308 - WALKER YELLOW 18" x 12"



3300??? 18" x 12"



3300??? 18" x 12"



3300??? 18" x 12"



3300??? 18" x 12"



3300??? 18" x 12"



3300??? 18" x 12"

Rani Designer



3401 - RED 17" x 12"



3402 - ALPINE BLUE 17" x 12"



3403 - MAGENTA 17" x 12"



CLASSIC - 201 15" x 12"



CLASSIC - 202 15" x 12"



CLASSIC - 203 15" x 12"



CLASSIC - 213 15" x 12"



CLASSIC - 214 15" x 12"



CLASSIC - 215 15" x 12"



CLASSIC - 204 15" x 12"



CLASSIC - 205 15" x 12"



CLASSIC - 206 15" x 12"



CLASSIC - 216 15" x 12"



CLASSIC - 217 15" x 12"



CLASSIC - 218 15" x 12"



CLASSIC - 207 15" x 12"



CLASSIC - 208 15" x 12"



CLASSIC - 209 15" x 12"



CLASSIC - 219 15" x 12"



CLASSIC - 220 15" x 12"



CLASSIC - 210 15" x 12"



CLASSIC - 211 15" x 12"



CLASSIC - 212 15" x 12"



LORDS - 401 18" x 14"



LORDS - 402 18" x 14"



LORDS - 403 18" x 14"



2501 - MARBLE YELLOW 20" x 16"



2502 - MARBLE RED 20" x 16"



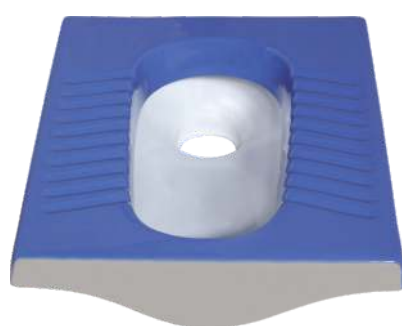
2503 - MARBLE A. BLUE 20" x 16"



2504 - WOODEN 20" x 16"



2505 - BLUE 20" x 16"



2506 - ALPINE BLUE 20" x 16"



2507 - MAJENTA 20" x 16"



2508 - BURGUNDY 20" x 16"



2509 - AQUA GREEN 20" x 16"



2601 - RUSIT MAJENTA 20" x 16"



2602 - RUSIT BLACK 20" x 16"



2603 - RUSIT ALPINE BLUE 20" x 16"

## EWC TANK and SEAT COVER



EWC LLC 15" x 12"



EWC Tank 15" x 12"



EWC Tank 15" x 12"



EWC Tank



EWC Tank



EWC Seat Cover



ANGLO Seat Cover



SOFT CLOSE Seat Cover

## COLOUR RANGE

### REGULAR COLOUE



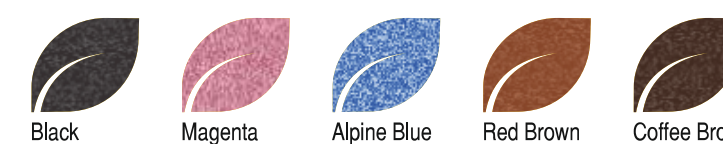
### SPECIAL COLOUR



### EXCLUSIVE COLOUR

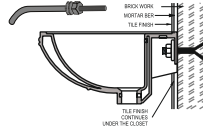


### RUSTIC COLOUR



## WALL HUNG BASIN

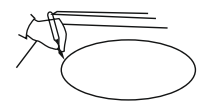
- 1) The rag bolt should be first grouted into the wall using cement/concrete, (as shown) as per distance between slots provided in the wash basin. The bolts should be fixed perpendicular to the wall. Allow cement/concrete to set. Check if the Rag Bolts are firmly fixed. Fix the Wash Basin in the bolt using Nut & Washer.
- 2) If brackets are use, prefer Nylon or Aluminium instead of iron brackets as it tends to rust.
- 3) If small basins are screwed to wall, use Nylon washers and steel screws.
- 4) While fixing waste outlet, ensure that the rubber washer is placed on the outlet under the basin.



## COUNTER WASH BASIN

### At the beginning

1. A skilled or experienced person should install counter lavatories.
2. Avoid using adhesive with this product.
3. Check the waste area and supply tubing if required.
4. Do not open the lavatory from its protective carton until you are ready for installation.
5. Please follow all local building and plumbing codes.



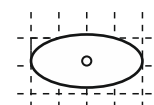
### MATERIAL & TOOLS

Measure tape, keyhole or sober saw, Hammer, Glasses, Rage or Paper towelling, Drill (1/2 dia, drill bit or larger), Pencil, sealant, sharp knife or scissors.

## INSTALLATION OF LAVATORY

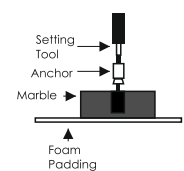
**Please Note :** Please install it in a way that future removal from underneath the counter top is possible without damaging the counter top.

1. Please check the desired location for clearance between the back splash, faucet, fixture and cabinet.
2. Please cut the template.
3. Please carefully trace the template on the counter top as directed.
4. Please mark the faucet hole centerline on the counter top.
5. Please drill a 1/2" pilot on the inside of the cut line.



### For Wood Counter tops:

1. Mark and pre-drill the wood screw holes at the locations shown on the template.
2. Waterproof any exposed areas of wood.



### For Marble Counter tops:

1. Position the counter top upside down on foam padding to protect the surface. Mark and drill 3/6" holes 5/8" deep at the locations shown on the template.
2. Use a setting tools and hammer to secure the anchors.



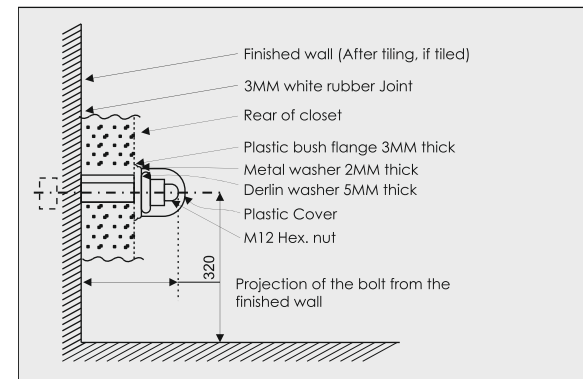
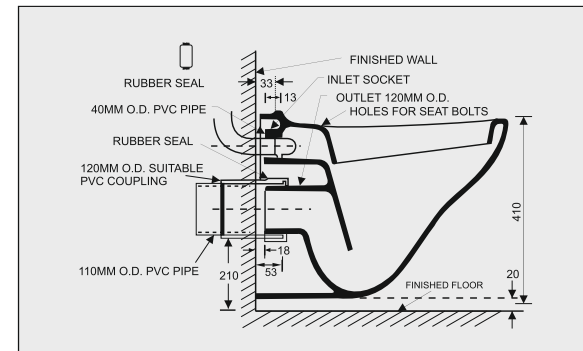
### For All Installations :

1. If the counter top has not been installed, install it at this time.
2. Drill the faucet holes according to the faucet installation instructions.
3. Install the faucet to the counter top according to the manufacture's instructions.
4. Install the drain to the lavatory according to the manufacturer's instructions.

## INSTALLATION DETAILS OF WALL HUNG

### CONCEALED WALL HUNG

1. If the wall is going to be plastered for a thickness of 12 mm and a tile thickness of 6-7 mm, the projection of the bolts from the finished wall should be 66 mm only.
2. If the thickness of Plastering and tile is less than the dimensions mentioned above, the bolts that are supplied along with the bracket should be moved into the wall by using a suitable spacer washer between the bolt head and the bracket frame.
3. The bracket should be buried into the floor so that the height from the center line of the bolt to the surface of the finished floor is 320 mm.



## MAINTENANCE

Like any other part of your houses, the bathroom can be made to look great and made to last long if it is taken care of regularly. To make your bathroom beautiful here are some valuable tips.

### Wash Basin

A mild detergent can be used to wash the basin at least once a day. After washing, the basin should be wiped out clearly to avoid water stains.

### Closets

Cleanser like harpic can be used to clear the closet with soft plastic brush, at least once a day. To avoid minute discoloring, after flushing the toilet give it a once over with the soft brush.

Keep the toilet brush handy in a convenient stand nearby. In case toilet and basins, if there has been no maintenance since long period of time, water deposit and discoloration can from on the surface of areas that get wet, In such causes, these stains/marks can be removed with the help of a solution of dilute hydrochloric acid. Clean with a soft cotton cloth and warm water with soap. Do not use thinner, dry cleaning liquids or powder paste. Use a liquid cleaner at least twice a week. Use Brasso or car rubbing compound and than polish with a cloth to remove fine scratches.

## Trouble shooting Guide

ITEM	PROBLEM	PROBABLE REASONS	CORRECTIVE ACTIONS
ONE PIECE CLOSET	1. Water not coming in bowl area while flushing	Mechanism inside tank may not be working properly	Change the center pump of mechanism
		There is no water in flush tank	Increase the ball cock height to the max level
	2. Water is continuously leaking inside the bowl	Mechanism inside tank may not be working properly	Change the center pump of mechanism
	3. water quantity insufficient for effective flushing	Ball cock height adjusted at lower level	Increase the ball cock height to the max level
	4. Uneven flow of water from both side of closet	Closet is not levelled properly	Closet should be in proper level
WALLHUNG WATER CLOSET	1. Water not coming in bowl area while flushing	Flush valve may not be working properly/ concealed cistern is not working properly	Should change flush valve I concealed cistern
		Flush pipe is inserted up the end of inlet hole	Insert the flush pipe up to the end of inlet
	2. Water is continuously leaking inside the bowl	Closet is not levelled properly	Closet should be in proper level
	3. Water quantity insufficient for effective flushing	Connection between closet outlet and drainage pipe is not proper	Proper connection should be made by experienced plumber
WASH BASINS / TABLE TOP	1. Overflow chocked and foul bad odour	Waste coupling used may be full threaded	Waste coupling should be replaced by slot cut coupling
	2. Water deposit on tap platform area and inside bowl area	Basin is not fixed in level of bracket is not in level	Should be done by proper levelling
	3. There is no tap hole in basin	Tap hole can be semi punched from of inlet hole	Tap hole should be created by plumber from semipunched area
EWC / PAN / ANGLO INDIAN	1. Water not coming in bowl area while flushing	Flush bend is not inserted up to the end of inlet hole	Insert the flush pipe up to the end of inlet (for pan closet: check whether flush pipe is not covering flush hole which is in both side of inlet wall)
		Closet / Pan may not be levelled	Should be done by proper levelling